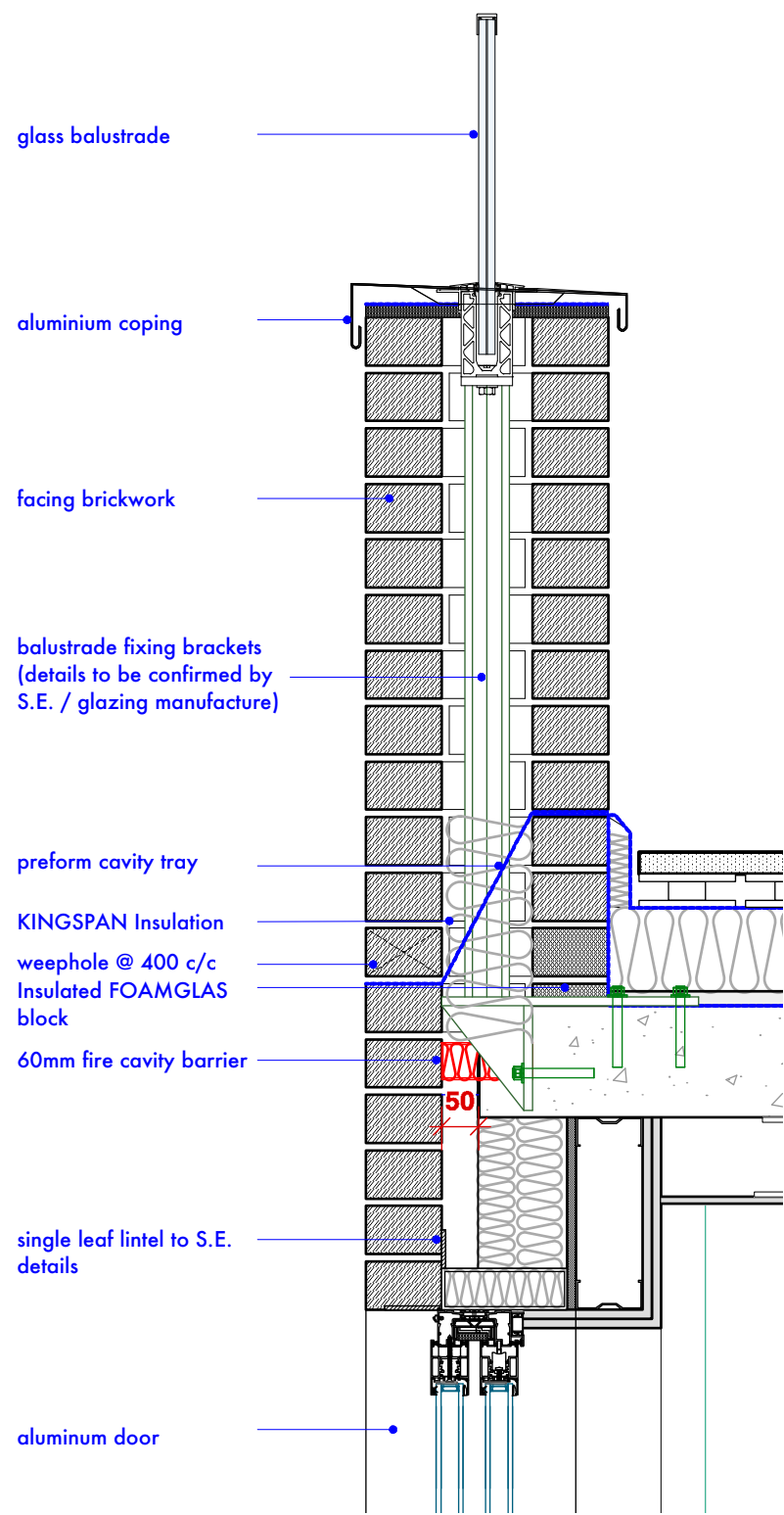


Typical Details - Blocks A & B  
D1.03 to D1.05



DETAILED 1-03  
SCALE 1:10 @ A3

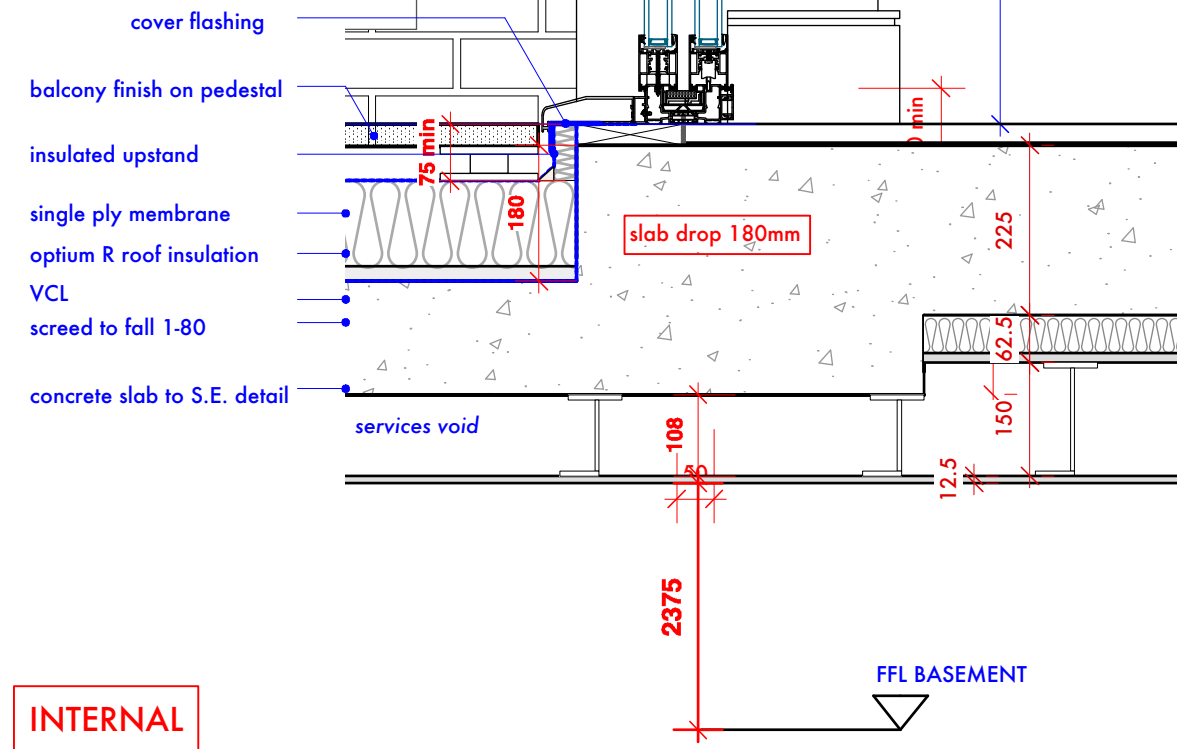
EXTERNAL

INTERNAL

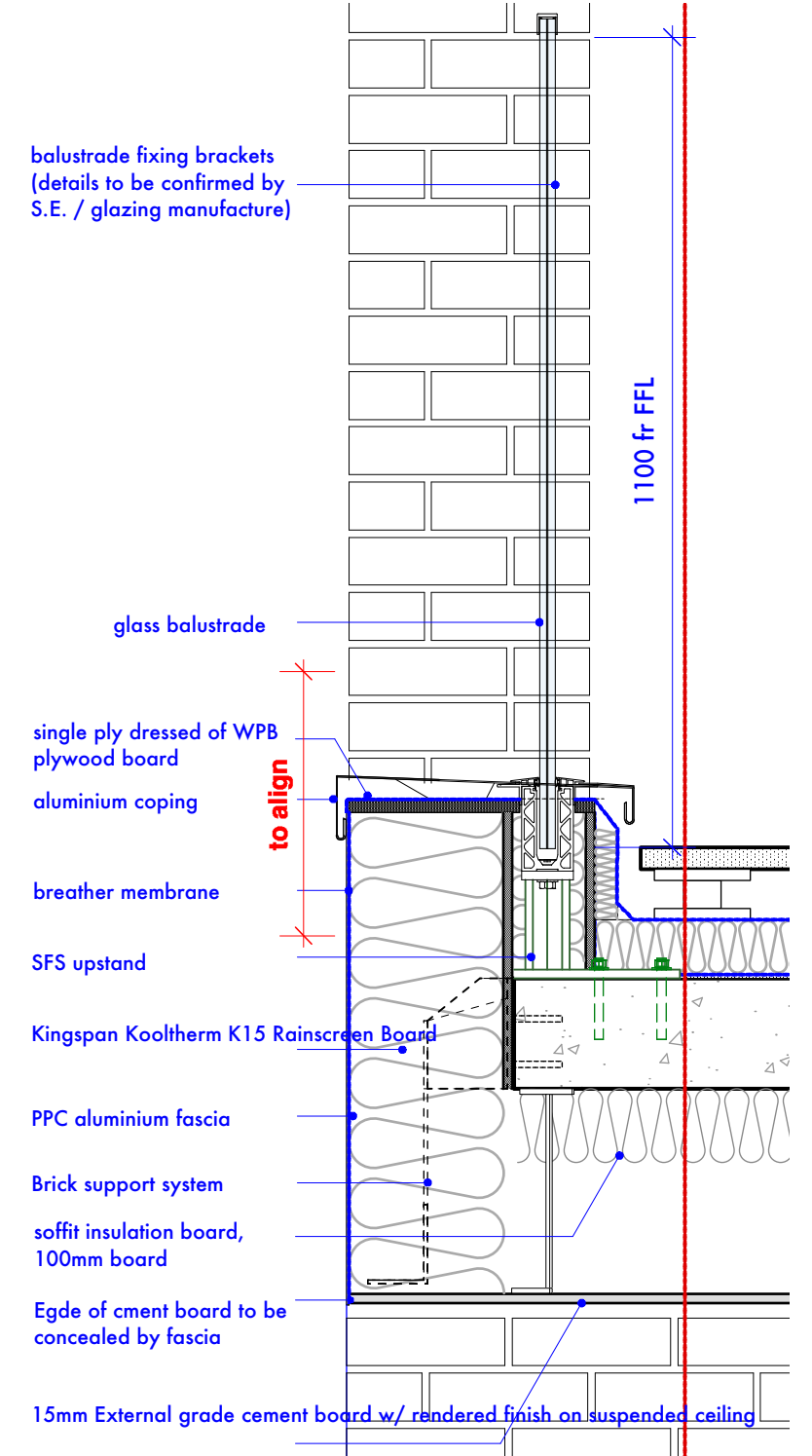
DETAILED 1-04  
SCALE 1:10 @ A3

DETAILS APPLIES TO BALCONY WHICH ARE OVER INTERNAL SPACES

TYPICAL BALCONY DETAILS  
GROUND FLOOR  
Balcony / Roof U-value 0.10W/m<sup>2</sup>K



INTERNAL



balustrade fixing brackets  
(details to be confirmed by  
S.E. / glazing manufacture)

glass balustrade

single ply dressed of WPB  
plywood board  
aluminium coping

breather membrane

SFS upstand

Kingspan Kooltherm K15 Rainscreen Board

PPC aluminium fascia

Brick support system

soffit insulation board,  
100mm board

Edge of cement board to be  
concealed by fascia

15mm External grade cement board w/  
rendered finish on suspended ceiling

DETAILED 1-05  
SCALE 1:10 @ A3

REV B - UPDATED TERRACE DETAIL  
REV A - REVISED BALUSTRADE FIXING DETAILS

|   |   |  |                                 |              |
|---|---|--|---------------------------------|--------------|
| DO NOT SCALE THIS DRAWING<br>WRITTEN DIMENSIONS ONLY TO BE USED<br>ALL DIMENSIONS ARE IN MILLIMETRES<br>ALL DIMENSIONS TO BE VERIFIED ON SITE<br>ANY INCONSISTENCIES TO BE REPORTED<br>TO THE ARCHITECT IMMEDIATELY | Job No <b>7235</b>                          | <b>p-ad</b><br>192D Compton Hill Road,<br>Notting Hill Gate, London, W8 7TH<br>t: 0208 4590172<br>e: info@p-ad.com | <b>p-ad</b>                     |              |
|   | <b>FOR CONSTRUCTION</b>                     |  |                                 |              |
|   | 108 SHEPHERDS BUSH ROAD<br>LONDON<br>W6 7PJ | title <b>Block A&amp;B - D1.03 to D1.05</b>  | number <b>7235/A&amp;B/E/08</b> | rev <b>B</b> |
|   | drawn by <b>MM</b>                          | scale <b>1 : 10 @ A3</b>   |                                 |              |

171220  
060619